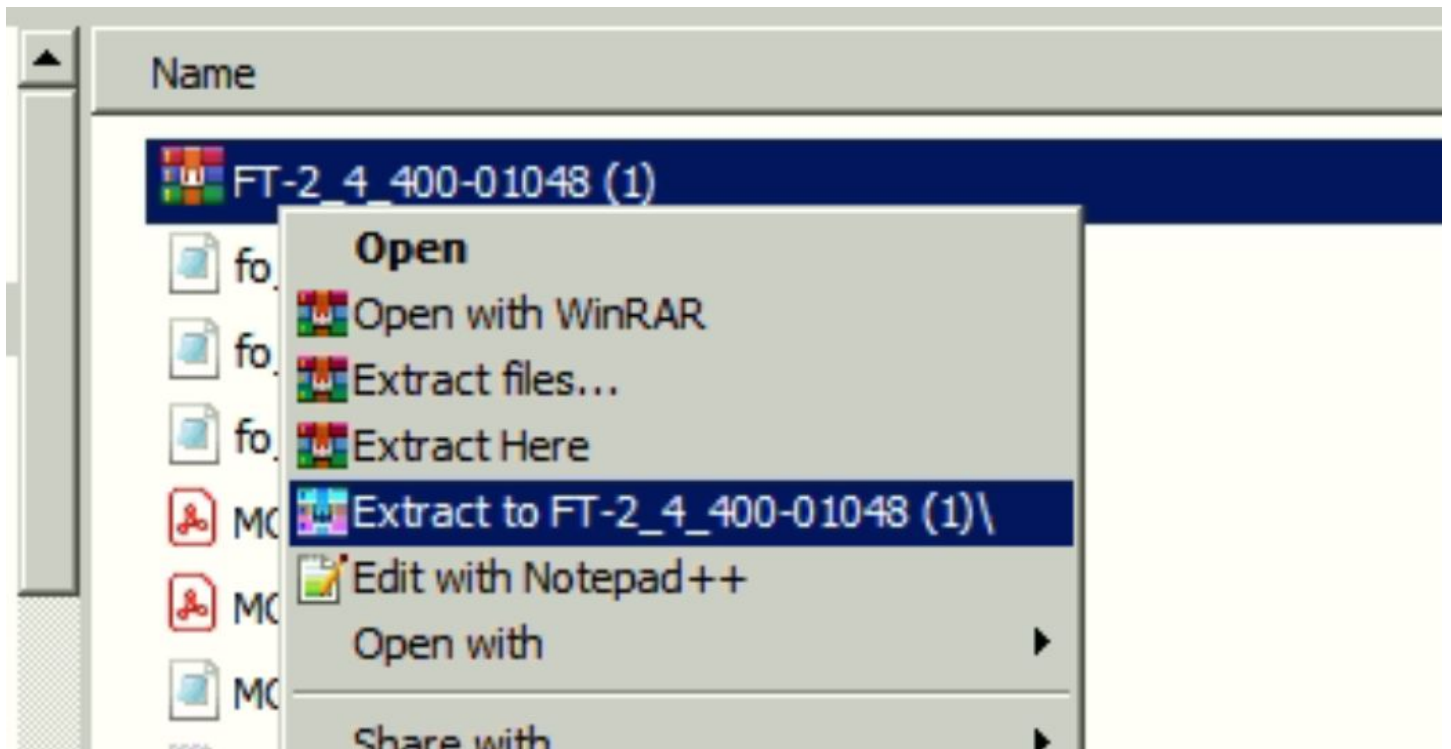


FastTrade Installation Guide

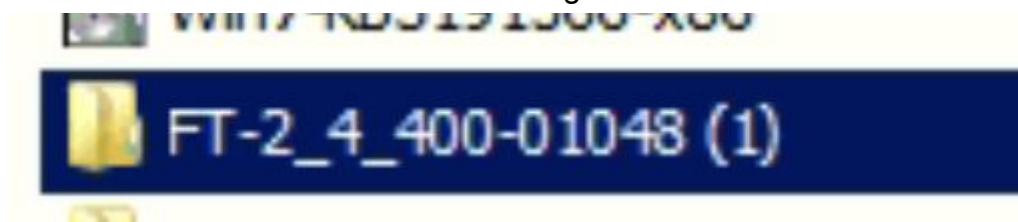
Step 1: Download the setup from <https://www.pmsec.in/ft>

Step 2: Unzip the downloaded 'rar' file by right clicking the file and clicking on the highlighted option in the image below:

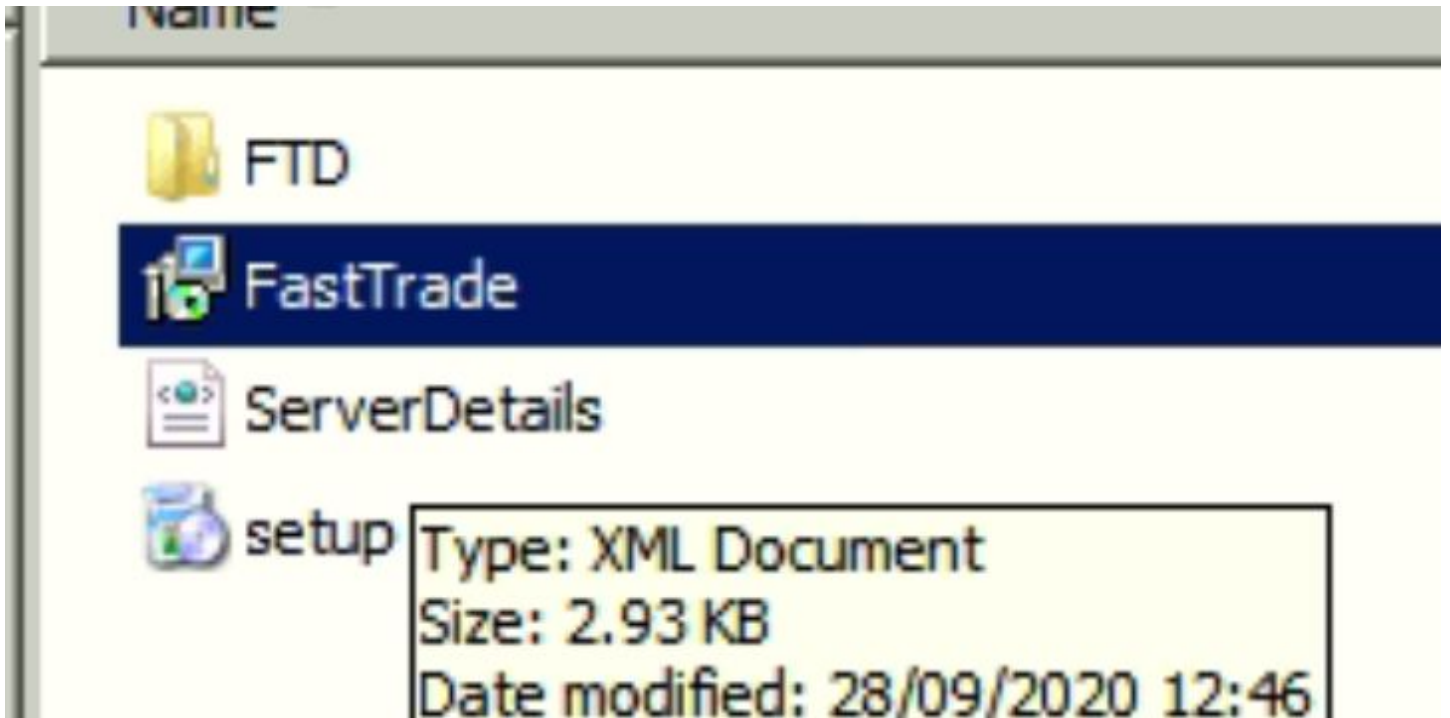


If you can't see any option to 'Extract' you might need to install a unzipper like [WinRAR](#)

Step 3: Once step 2 is done, you will be able to access the 'Setup' in the folder where you extracted the rar file. Like shown in the below image.



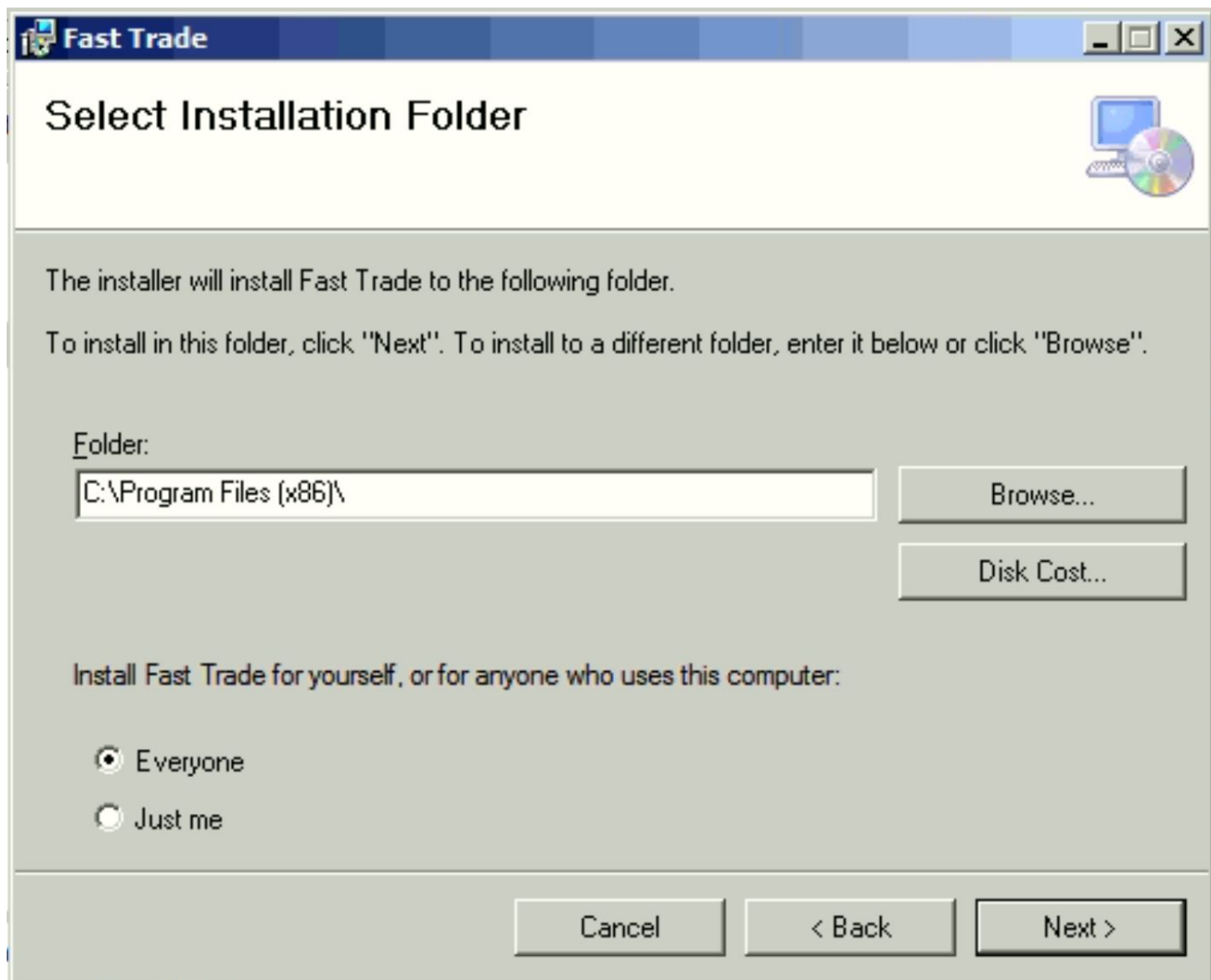
Step 4: Double click on the 'FastTrade' icon inside the folder.



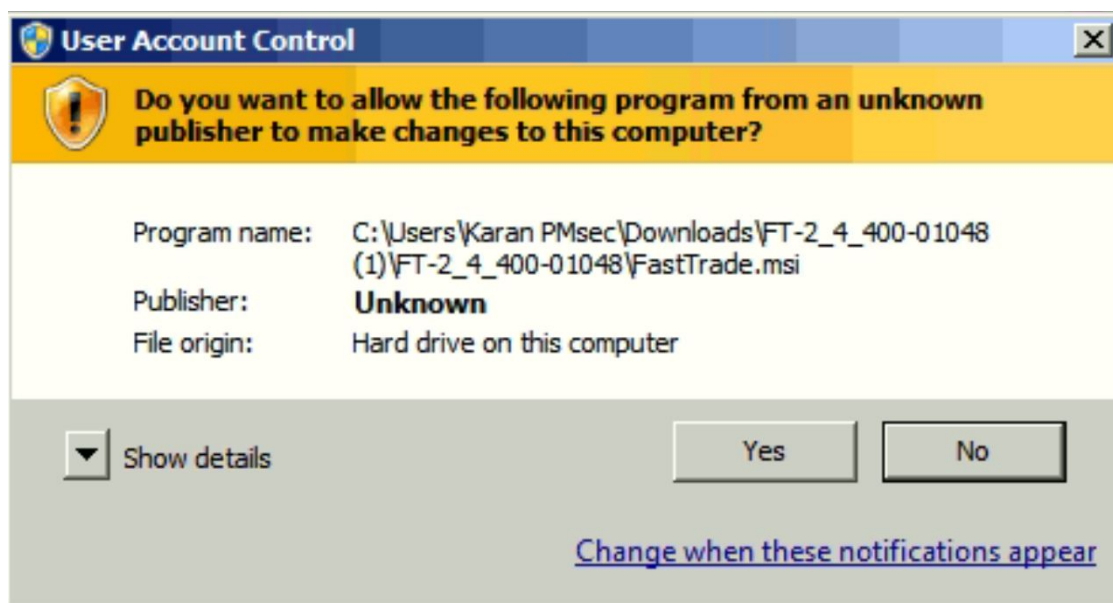
Step 5 : Follow the guided installation steps as per the images shown below.:



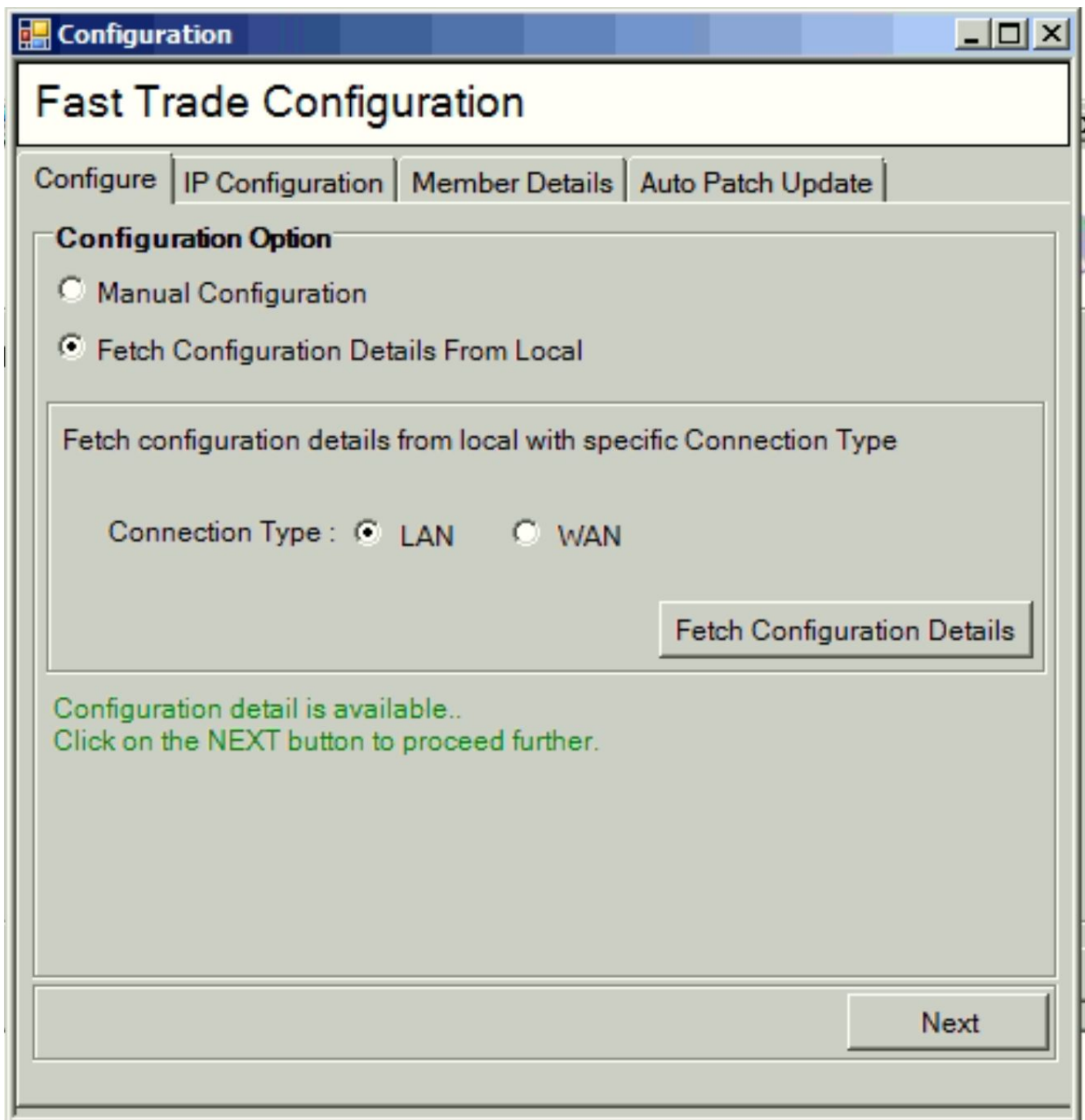
CLICK NEXT



CLICK NEXT



CLICK YES



CLICK NEXT

Configuration

Fast Trade Configuration

Configure | IP Configuration | Member Details | Auto Patch Update

Primary Configuration	Secondary Configuration
Trading Server Connections dion.pmsecportal.com 6000	Trading Server Connections dion.pmsecportal.com 7000
Feed Server Connections dion.pmsecportal.com 6005	Feed Server Connections dion.pmsecportal.com 7005
Service Server Connections dion.pmsecportal.com 6010	Service Server Connections dion.pmsecportal.com 7010

Primary Configuration Secondary Configuration

Trading Connection Type
 LAN WAN

Feed Protocol
 TCP UDP MultiCast Port: 9030 MCast: 233.1.2.5

TouchLine Feed Server
 Enabled TouchLine Feed IP: 0.0.0.0 Port: 0

ThirdParty Link URL http://dion.pmsecportal.com:80/STSB/	Forget Password Link URL http://dion.pmsecportal.com/WebLink/
Call n Trade IVR Listen Port:	Content Link URL http://14.141.46.130/TAWIframe

API Server URL (http://IP:Port)
https://dion.pmsecportal.com:6030

Previous Next

CLICK NEXT

Configuration

Fast Trade Configuration

Configure | IP Configuration | **Member Details** | Auto Patch Update

Member Details

Company Id :

Company Name :

NSE Member ID :

FONSE Member ID :

CDNSE Member ID :

BSE Member ID :

FOBSE Member ID :

MCX Member ID :

NCDEX Member ID :

MCXSX Member ID :

CDBSE Member ID :

COMNSE Member ID :

SEBI Registration No. :

Previous Next

CLICK NEXT

Configuration

Fast Trade Configuration

Configure | IP Configuration | Member Details | Auto Patch Update

Is Auto Patch Update :

Auto Patch Update Details

Download Patch From FTP :

URL Details

URLs :

FTP Details

FTP URLs :

User ID :

Password :

Previous OK Cancel

CLICK NEXT

